

ASP-coatWBE | 0.14mm per coat

ASP-coatWBE is a pigmented, water-based seal coat typically applied as a two-coat vapour permeable system.

ASP-coatWBE is best suited to coat floors, walls and ceilings in light duty areas where a cost effective, hygienic, durable and a dust free sealer is required.

BENEFITS



Provides good chemical resistance to light chemical attack and spillages



Easily mixed and applied with a mohair roller to horizontal, vertical and overhead substrates. Can be applied to damp or green concrete.



Hygienic, easy to clean, non-tainting and non-dusting coating



Cost effective, durable coating for light duty environments



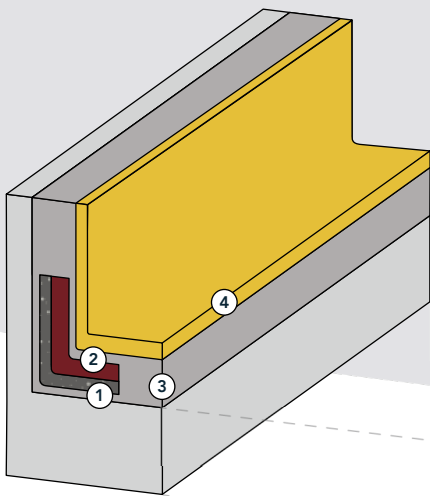
Can be used as a line marker to denote working zones

APPLICATIONS

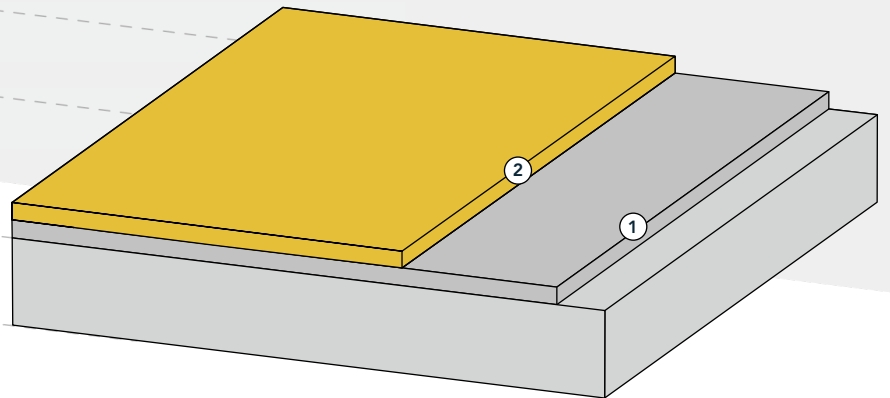
- Floors, walls and ceilings
- Light duty industrial process areas
- Warehouse & distribution centres
- Plant rooms & storage units.
- Garages
- Change rooms and ablution blocks
- Storage units

SYSTEM INFORMATION

Coving Components



Flooring Components



- 1** **Primer and Scatter Sand**
 · ASP-primeStd 4m²/litre · ASP-Quartz 1 1kg/m²

- 2** **Coving**
 · ASP-epoxyCove 1.8 litre/linear meter (75mm x 75mm)

- 3** **Primer**
 · ASP-primeStd 4m²/litre

- 4** **Coating**
 · ASP-coatWBE 6m²/litre

- 1** **Primer**
 · ASP-coatWBE 6m²/litre

- 2** **Coating**
 · ASP-coatWBE @ two coats 6-8m²/litre per coat

PRODUCT INFORMATION

PRODUCT CHARACTERISTICS	RESULT
Appearance	Pigmented Satin
Standard Colours*	     
Non-standard Colours**	     

Theoretical Coverage	6 - 8m ² / litre
Theoretical Coverage / 5l Kit	30m ² @ 6m ² /litre 35m ² @ 7m ² /litre 40m ² @ 8m ² /litre
Storage	Keep at an ambient temperature in dry, cold-free conditions
Shelf Life	12 months in unopened original packaging

*RAL Numbers are only indicative of a reference of colour.

**Non-standard colours are available at a premium on request of a minimum order quantity.

TECHNICAL INFORMATION

PERFORMANCE CRITERIA	RESULT	
Mix Ratio	1 Part Base A : 4 Parts Hardener B by Volume	
Chemical Resistance	Resistant to a very wide range of chemicals. For a full chemical resistance breakdown contact our Sales or Technical Services team.	
Working Time	35 minutes at 20°C.	
Speed of Cure @20°C	Light Traffic – 24 Hours	Full Chemical Cure – 7 days
	Full Traffic – 24 Hours	

SUBSTRATE AND PREPARATION REQUIREMENTS

Concrete substrates to be coated must be sound and exhibit a minimum compressive strength of 25N/mm² and a minimum of 1.5N/mm² tensile strength for the application of the proposed system. The profile and levels must be appropriate for the application of the proposed system, capable of bearing loads, free of cracks and voids, and free from laitance, dust, oil and other contamination. Should there be impurities such as penetrated oils, etc., please refer to the ASP Technical Team for a suitable and appropriate substrate preparation guideline or solution. The substrate may be prepared by diamond grinding to remove laitance. Irregularities, small damages and cracks must be repaired with an epoxy filler.

APPLICATION

PRIMER

Mix Base A and Hardener B with a low speed drill fitted with a spiral mixing blade for approximately 3 minute to obtain a homogeneous mixture. Ensure excessive air is not introduced while mixing. The mixed material must be applied within 35 minutes at 20°C. Apply immediately after mixing with a short haired mohair roller, working the resin well into the substrate, permeating any surface irregularities. On porous substrates apply further resin until the substrate is completely wetted out. Avoid any ponding of the primer.

TOPCOAT

Apply immediately after mixing with a short haired mohair roller. ASP-coatWBE must be applied in two coats. The second coat may be applied no later than 24 hours after the first coat. Optional non-slip and textured finishes are available.

For more detailed information on substrate requirements and preparation, priming and application of the top coat, please refer to the product's method statement.

CLEANING OF TOOLS AND EQUIPMENT

All tools, equipment and mixing vessels may be immediately cleaned with a suitable water soluble solvent, epoxy thinners or acetone. Ensure that all washings are disposed of in accordance with the local environmental, health and safety by-laws.

MAINTENANCE

It is recommended that all spillages onto the ASP-coatWBE be cleaned immediately to maintain the appearance and life span of the coating. ASP-coatWBE must be regularly cleaned with a rotary brush or mechanical scrubbers using a suitable detergent.

ENVIRONMENTAL, HEALTH AND SAFETY REQUIREMENTS

Applicators must ensure the use of appropriate personal protective equipment when working with the product. All used and empty packaging, used solvents and washings must be disposed of in accordance with the local environmental, health and safety by laws. Please refer to the product's material safety data sheet for more detailed information.

LEGAL NOTICE

African Specialist Polymers' systems and products are guaranteed against defective material and manufacture and are sold subject to its Standard Terms and Conditions of Sale, copies of which can be obtained on request.

The information and the recommendations relating to the application and end-use of African Specialist Polymers' products are given in good faith, based on African Specialist Polymers' current knowledge and experience of the products when stored, handled and applied in accordance with African Specialist Polymers' recommendations.

The information herein is of a general nature and as such no assumption can be made about a product's suitability for a particular use or application and no warranty as to its accuracy, reliability or completeness either expressed or implied is given other than those required by law. The user is responsible for checking the suitability of the selected products for their intended use.