

## ASP-screedSTB | 3.0 - 4.0mm

ASP-screedSTB is a power trowel applied decorative quartz system that offers excellent chemical impact and wear resistance.

ASP-screedSTB is best suited to coat floors in medium to heavy duty dry areas where an aesthetically appealing, hard-wearing floor finish is required.

### BENEFITS



Hygienic, easy to clean, non-tainting and non-dusting coating



Aesthetically appealing and excellent wear resistance for medium to heavy duty foot, forklift and rubber wheeled traffic



Excellent resistance to cleaning solvents and various other industrial chemicals

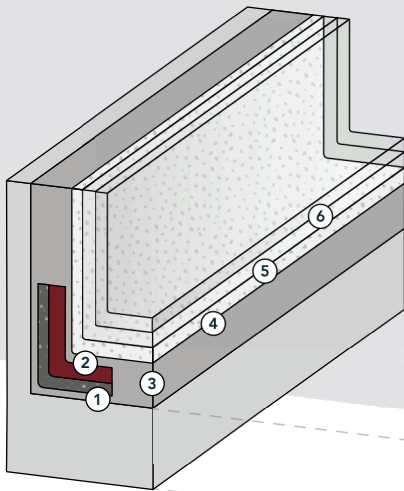


Temperature tolerance of up to 50°C

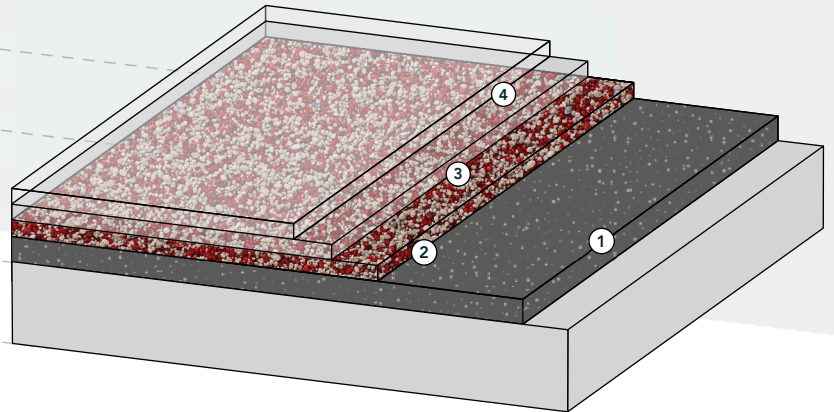
### APPLICATIONS

- Retail outlets, supermarkets and malls
- Pharmaceutical facilities
- Warehouse and distribution centers
- Automotive and printing facilities
- Offices and entrance foyers
- Light to medium duty manufacturing and industrial process areas
- Hotels, casinos and leisure venues
- Airports
- Restaurants
- Ablution blocks, hospitals, canteens and schools

Coving Components



Flooring Components



**1** **Primer and Scatter Sand**  
 · ASP-primeStd · ASP-Quartz 1  
 4m<sup>2</sup>/litre 1kg/m<sup>2</sup>

**2** **Coving**  
 · ASP-epoxyCove  
 1.8 litre/linear meter  
 (75mm x 75mm)

**3** **Primer**  
 · ASP-primeStd  
 4m<sup>2</sup>/litre

**4** **Screed**  
 · ASP-screedSTB

**5** **Seal Coat**  
 · ASP-clearcoat  
 4m<sup>2</sup>/litre

**6** **Finish Coat**  
 · ASP-coatSC  
 8-10m<sup>2</sup>/litre

**1** **Primer and Scatter Sand**  
 · ASP-primeSTD · ASP-Quartz 1  
 · 4m<sup>2</sup>/Litre 1kg/m<sup>2</sup>

**2** **Slurry and Broadcast Sand**  
 · ASP-screedPTSslurry · ASP-Quartz 5  
 · 1.6 litre/m<sup>2</sup> 4kg/m<sup>2</sup>

**3** **Seal Coat**  
 · ASP-clearcoat  
 · 4m<sup>2</sup> /litre

**4** **Finish Coat**  
 · ASP-coatSC  
 · 8-10m<sup>2</sup> /litre

PRODUCT INFORMATION

PRODUCT CHARACTERISTICS	RESULT
Appearance	Gloss or Matt Encapsulated Decorative Quartz
Standard Colours	 Silver    Rust    Marine    Gold Dust    Fir Green    Copper Dust    Cobalt

PRODUCT CHARACTERISTICS	RESULT
Standard Colours	     Desert Tan    Charcoal    Candy Red    Ash    Black Berry
Non-Standard Colours	Customised colour blends available upon request
Theoretical Coverage System	3-4mm
Storage	Store all components at 10°C – 25°C in dry, cold-free conditions
Shelf Life	12 months in unopened original packaging for all components

## TECHNICAL INFORMATION

PERFORMANCE CRITERIA	RESULT
Fire Resistance	Class4 – SANS 10177 : Part 4 : 2005
Slip Resistance	BS EN 13036-4:2011 (4-S Rubber Slider) Dry 59 Wet 35
Compressive Strength	SABS SM 863:1994 >70 N/mm <sup>2</sup>
Flexural Strength	SABS SM 864:1994 >25 N/mm <sup>2</sup>
Tensile Strength	SABS SM 1253:1994 >10 N/mm <sup>2</sup>
Impact Resistance	ISO6272-1:2011 1kg weight >1.8m 2kg weight >1.5m
Chemical Resistance	Resistant to a wide range of chemicals. For a full chemical resistance breakdown contact our Sales or Technical Services Team.
Working Time	15 - 20 minutes @ 20°C
Speed of Cure @20°C	Light Foot Traffic – 16 Hours      Heavy Duty Traffic – 48 hours
	Light Traffic – 24 Hours      Full Chemical Cure – 7 days

## SUBSTRATE AND PREPARATION REQUIREMENTS

Concrete substrates to be coated must be sound and exhibit a minimum compressive strength of 25N/mm<sup>2</sup> and a minimum of 1.5N/mm<sup>2</sup> tensile strength for the application of the proposed system. The profile and levels must be appropriate for the application of the proposed system, capable of bearing loads, free of cracks and voids, and free from laitance, dust and other contamination. Should there be impurities such as penetrated oils, etc., please refer to the ASP Technical Team for a suitable and appropriate substrate preparation guideline or solution. The substrate may be prepared by blasting, scarifying or diamond grinding to remove laitance. Irregularities, small damages and cracks must be repaired with an epoxy filler.

## APPLICATION

### PRIMER

Mix Base A and Hardener B with a low speed drill fitted with a spiral mixing blade for approximately 3 minutes to obtain a homogeneous mixture. Ensure air is not introduced while mixing. The mixed material must be applied

within 15 minutes at 20°C. Apply immediately after mixing with a roller or double-lipped rubber squeegee, working the resin well into the substrate, permeating any surface irregularities. On porous substrates, apply further resin until the substrate is completely wetted out. Avoid any ponding of the primer.

## **SLURRY COAT**

Mix Base A and Hardener B together with a low speed drill fitted with a spiral mixing blade for approximately 3 minutes to obtain a homogeneous mixture. Slowly add in the Filler C and mix for a further 2 minutes. Ensure air is not introduced while mixing. The mixed material must be applied within 15 minutes at 20°C.

Apply immediately after mixing with a with a flat edge steel trowel or squeegee. Allow to stand for a few minutes and then broadcast to full saturation with the coloured quartz. Broadcast again over areas that are still resin rich. Allow to stand for 10 - 15 minutes to let the coloured quartz settle. The surface can now be floated with a light weight power trowel fitted with soft plastic blades to minimise trowel marks. Do not over trowel. When power floating, leave an untrowelled edge of about 15cm to seamlessly tie in the next section.

## **SEAL COAT**

De-nib the entire area to be sealed. Remove any loose particles and high spots. Vacuum the area. Mix Base A and Hardener B with a low-speed drill fitted with a spiral mixing blade for approximately 3 minutes to obtain a homogeneous mixture. Ensure air is not introduced while mixing. The mixed material must be applied within 15 minutes at 20°C. Apply immediately after mixing with a roller or double-lipped rubber squeegee.

## **SATIN COAT**

Mix Base A and Hardener B with a low-speed drill fitted with a spiral mixing blade for approximately 3 minutes to obtain a homogeneous mixture. Ensure air is not introduced while mixing. The mixed material must be applied within 15 minutes at 20°C. Apply immediately after mixing with a roller or double-lipped rubber squeegee.

For more detailed information on substrate requirements and preparation, priming and application of the top coat, please refer to the product's method statement.

## **CLEANING OF TOOLS AND EQUIPMENT**

All tools, equipment and mixing vessels may be immediately cleaned with a suitable water soluble solvent, epoxy thinners or acetone. Ensure that all washings are disposed of in accordance with the local environmental, health and safety by-laws.

## **MAINTENANCE**

It is recommended that all spillages onto the ASP-screedSTB be cleaned immediately to maintain the appearance and lifespan of the coating. ASP-screedSTB must be regularly cleaned with a rotary brush or mechanical scrubbers using a suitable detergent.

## ENVIRONMENTAL, HEALTH AND SAFETY REQUIREMENTS

Applicators must ensure the use of appropriate personal protective equipment when working with the product. All used and empty packaging, used solvents and washings must be disposed of in accordance with the local environmental, health and safety by laws. Please refer to the product's material safety data sheet for more detailed information.

## LEGAL NOTICE

African Specialist Polymers' systems and products are guaranteed against defective material and manufacture and are sold subject to its Standard Terms and Conditions of Sale, copies of which can be obtained on request.

The information and the recommendations relating to the application and end-use of African Specialist Polymers' products are given in good faith, based on African Specialist Polymers' current knowledge and experience of the products when stored, handled and applied in accordance with African Specialist Polymers' recommendations.

The information herein is of a general nature and as such no assumption can be made about a product's suitability for a particular use or application and no warranty as to its accuracy, reliability or completeness either expressed or implied is given other than those required by law. The user is responsible for checking the suitability of the selected products for their intended use.